

IW3000 INSTALLATION INSTRUCTIONS

The IW3000 Infrared Window is a precision designed accessory. The window offers a high quality inspection aid, whilst boasting a long lasting life-span. Please read and follow these instructions carefully before attempting to install the unit.

USAGE NOTES

For use on a flat surface of a type 4/12 enclosure. Failure to follow these instructions may lead to damage or injury. Comply with local and national safety requirements when working in hazardous locations.

BEFORE YOU START

The installation may be carried out by using either a circular hole saw or an electro-hydraulic hole punch.

Tools Required:

1. Hydraulic punch or hole saw (73-74mm (27/8"))
2. Drilling Machine
3. Conedrill
4. Pozidrive screwdriver
5. Centre Punch
6. 6mm (1/4") High-speed twist drill
7. Tapping drill for IW3000 units use 3.6mm (9/64")

GETTING STARTED

1

Unpack and Check

When your Infrared Window arrives, carefully unpack the unit and check contents:

1. IW3000 unit (1)
2. Fixing screws (4)
3. Drilling template (1)
4. Access key (1)

2

Fit the Drilling Template onto a Flat Surface

Once you have confirmed the position of the unit, select the drilling points. Peel off the back and stick to the panel the template reference points.

3

Centre Punch

Using the centre punch, punch the fixing holes as marked and 1 No. centre hole.

4

Drill Centre Hole

Using the 6mm (1/4") twist drill, drill out the centre hole (B).

5

Drill Fixing Holes

Using the 3.6 (9/64") twist drill, drill out the fixing holes.

If using a hole saw, proceed to step 6(A).
If using the hole-punch, proceed to step 6 (B).

6a

Enlarging the Centre Hole (Hole Saw)

Using the 6mm (1/4") hole as a guide, enlarge the centre hole using the selected hole saw. De-burr all of the holes and treat as required. Proceed to step 8.

6b

Enlarging the Centre Hole (Hole Punch)

Refer to the Hydraulic punch manual and follow all safety procedures.

Using the centre punch, punch the fixing holes as marked and 1 No. centre hole. Proceed to step 7.

7

Enlarging the Centre Hole (Hole Punch)

Referring to Table 3, and following the instructions in Hydraulic punch material, punch out the centre hole.

8

De-Burr the Holes; Remove any Shavings and the Self Adhesive Template

Degrease the front panel.

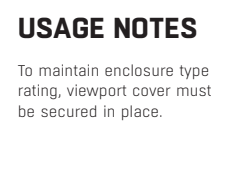
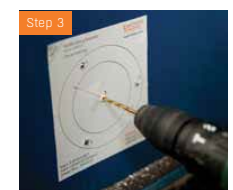
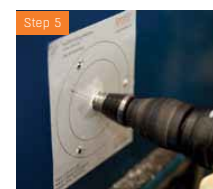
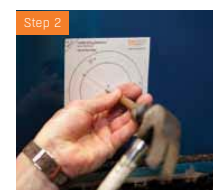
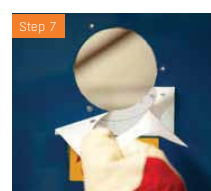
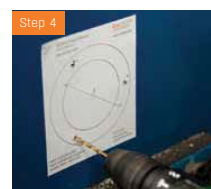
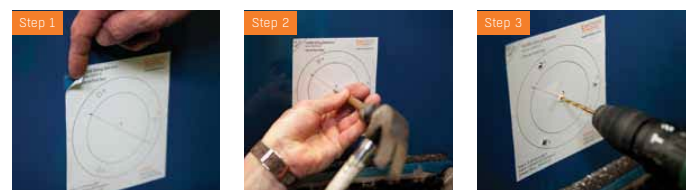
9

Fix Infrared Window

Align the fixing holes and firmly press the Infrared Window into place.

With the correct sized screwdriver and 3 of the 4 countersunk screws supplied, fix the window to the panel.

Gradually advance each fixing until to torque setting between 0.5 – 1lbf.in (0.68 – 1.36N.m) is achieved and units are secure.



USAGE NOTES

To maintain enclosure type rating, viewport cover must be secured in place.